



***Pishro Tajhiz
Alvand***



EARTHING SYSTEMS

**& OverHead Lines Accessories
Manufacturer**



DEEP EARTHING

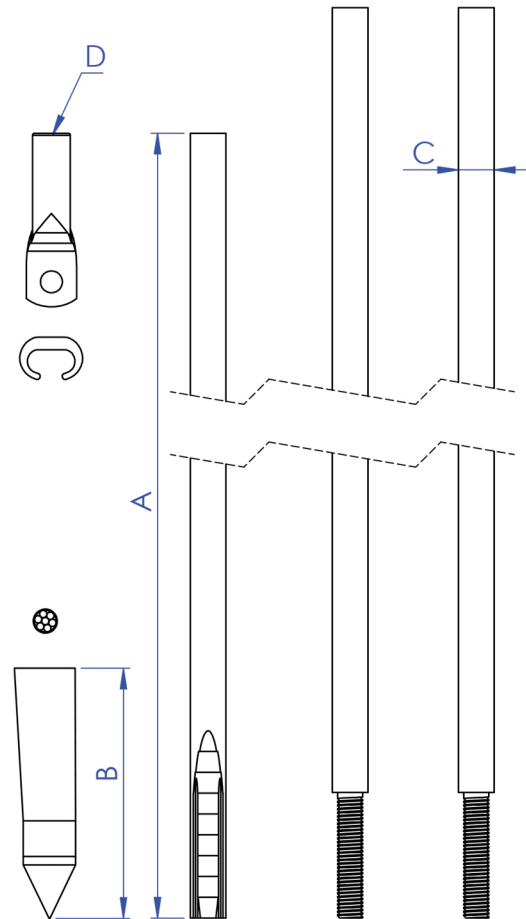
Deep earthing concept is a system without extra connection points. The types of earthing electrodes are copper and galvanized steel wires which is pulled down by means of 0.85 m steel tubes ("rods"). A hardened steel tip locks the electrode into the leading rod. For each extension rod the wire is pulled a further 0.85 m down alongside the rods. Earthing resistance may be continuously monitored at the other end of the wire, the driving down is interrupted when a satisfactory low resistance is reached. The top extension rod is pulled up and reused.



EARTHING SYSTEMS

[Deep Earthing Type]

- Mechanical Part: Steel
- Electrical Part: Copper Alloy & HDG
- Electrode Length > 2.44 m
- IEC 60364-5



Approved by:

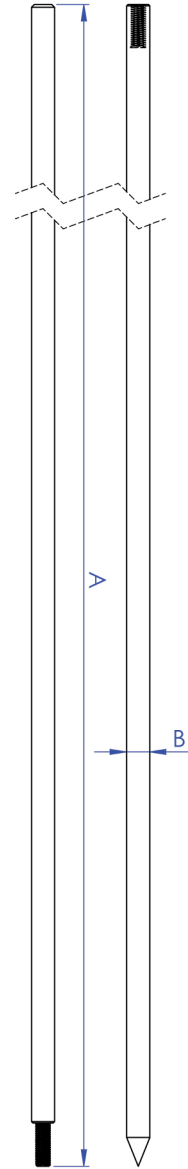




EARTHING SYSTEMS

[Stainless Steel Type]

- Tensile Strength: 500 to 770 N/ mm²
- Maximum Electrical Resistivity: < 0.8 μΩm
- IEC 62561



Product Model	Material	Electrode Length (m)	Coupling Size (mm)	A(mm)	B (mm)	Weight (kg) ± 3%
SS1615	Stainless Steel	3	M10	1500	16	4.5

Approved by:

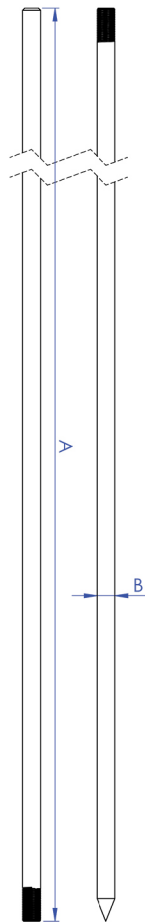




EARTHING SYSTEMS

[Galvanized Steel Type]

- Tensile Strength: 350 to 770 N/ mm²
- Maximum Electrical Resistivity: < 0.25 μΩm
- IEC 62561



Product Model	Material	Electrode Length (m)	Coupling Size (mm)	A(mm)	B (mm)	Weight (kg) ± 3%
SGL1615	HDG	1.5	M10 or M20	1500	16	2.3
SG1615	HDG	3	M10 or M20	1500	16	4.8

Approved by:



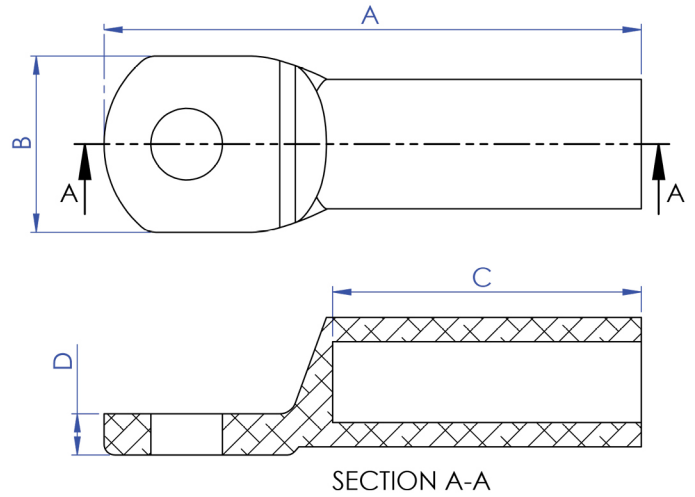


CABLE LUG



[Aluminum Type]

- Material: Aluminum Alloy (Tinned plated)
- Manufacturing Process : Cold Forging
- Permissible Values of the Factor (δ) < 0.3
- IEC 61238-3



Product Model	Cable Size (mm ²)	Bolt Diameter (mm)	A(mm)	B (mm)	C (mm)	D (mm)	Mechanical Load (kN)
CA5010	50	10	75	25	42	5.5	2
CA7012	70	12	89	25	52	6	2.8
CA9512	95	12	93	25	56	6	3.8
CA12012	120	12	97.5	30	56	7.5	4.8
CA15012	150	12	107	30	60	8	6
CA18512	185	12	110	30	60	8	7.4

Approved by:

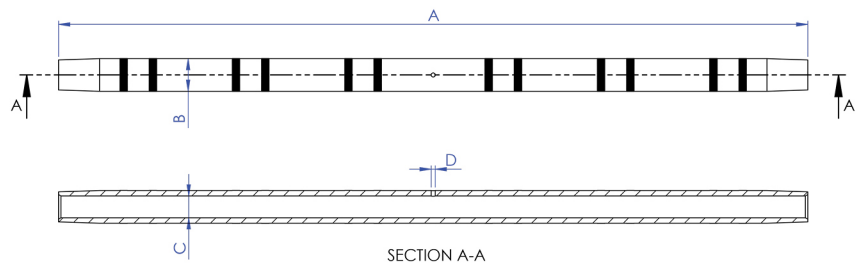




SPLICE CONNECTOR

[Aluminum Type]

- Material: Aluminum Alloy
- Manufacturing Process : Extrude
- Permissible Values of the Factor (δ) < 0.3
- IEC 61238-3



Product Model	Cable Size (mm ²)	A(mm)	B (mm)	C (mm)	D (mm)	Mechanical Load (kN)
SL07P	70	200	20	16	3	-
SL07F	70	500	20	16	3	> 2
SL12P	120	250	24	16	3	-
SL12F	120	500	24	16	3	> 4

Approved by:

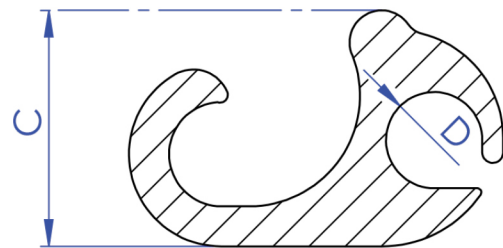
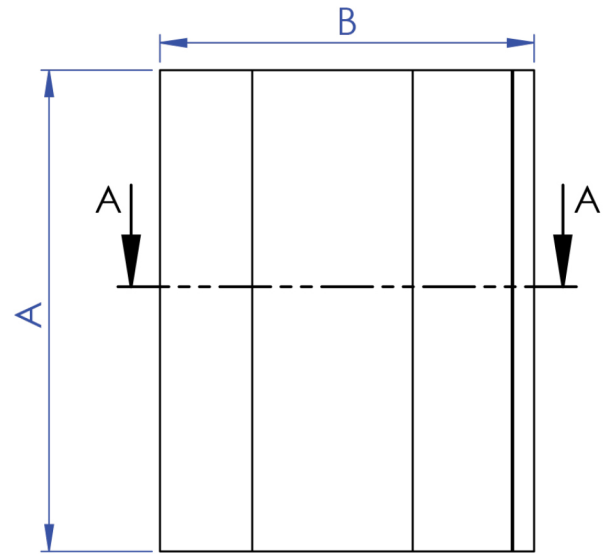




COMPRESSION CLAMPS

[S Type]

- Material: Aluminum Alloy
- Permissible Values of the Factor (δ) < 0.3
- IEC 61238-3



SECTION A-A

Product Model	Main (mm ²)	Tap (mm ²)	A(mm)	B (mm)	C (mm)	D (mm)	Mechanical Load (kN)
S127	120	70	60	46.5	29.5	6	2.8
S1212	120	120	60	48	30.5	8	4.8

Approved by:

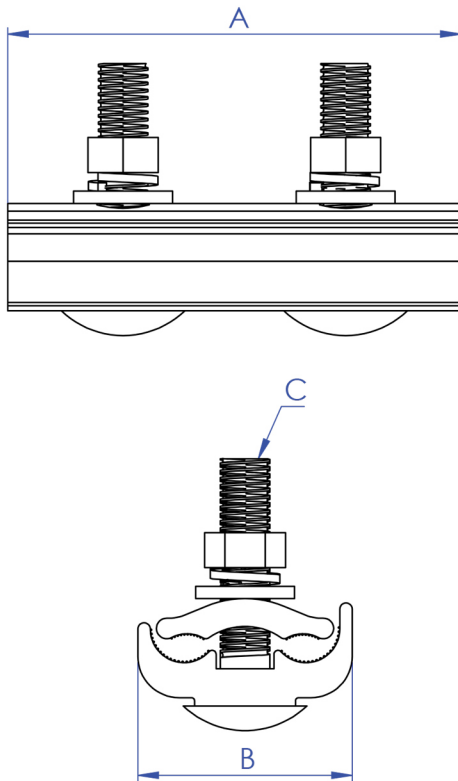




CONNECTOR

[Parallel Groove Type]

- Material: Aluminum Alloy
- Manufacturing Process : Extrude
- Permissible Values of the Factor (δ) < 0.3
- IEC 61238-3



Product Model	Main (max)	Tap (min)	A(mm)	B (mm)	C (mm)	Mechanical Load (kN)
PC 35 150	150 mm ²	35 mm ²	110	52	12	2 - 6

Approved by:

